

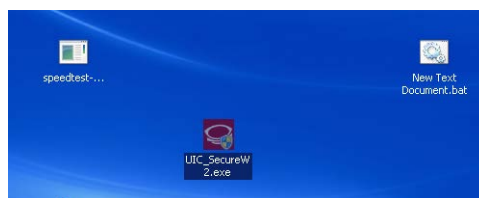
संगणक एवं सूचना केन्द्र
Computer and Informatics Centre
भारतीय प्रौद्योगिकी संस्थान खड़गपुर
Indian Institute of Technology, Kharagpur

CONFIGURING WI-FI AUTHENTICATION ON WINDOWS7 DEVICES

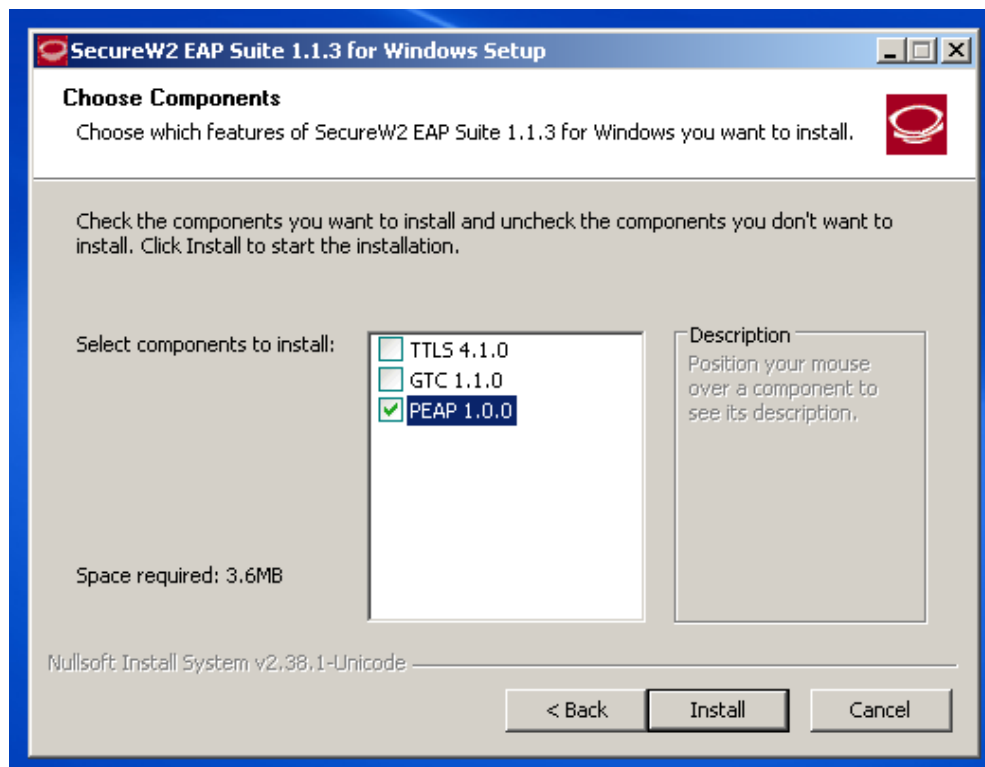
Note: You will have to configure each SSID only once if you use the same user id and password. This is a typical configuration for windows7 devices, Screenshot may slightly differ depending upon devices.

First Time Configuration

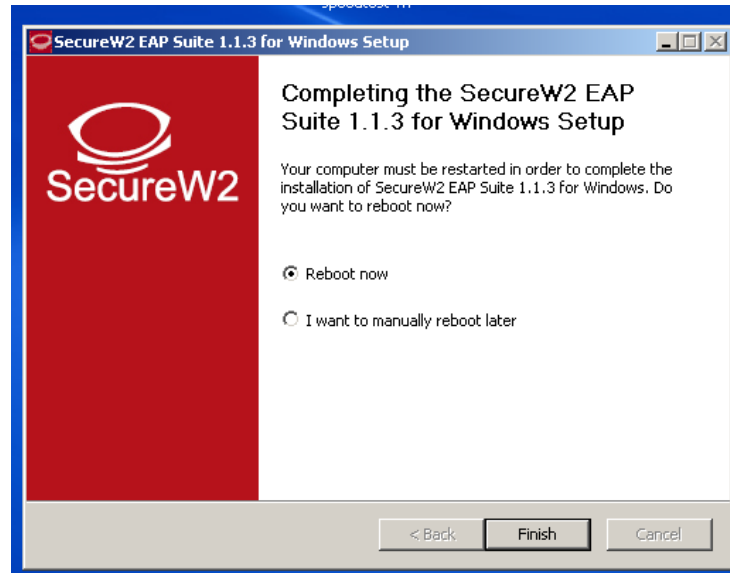
1. Download the required software from the link – http://swrepo.iitkgp.ac.in/WiFi-Authentication-Tools/UIC_SecureW2.exe .
2. Double click on the downloaded “UIC_SecureW2.exe” file.



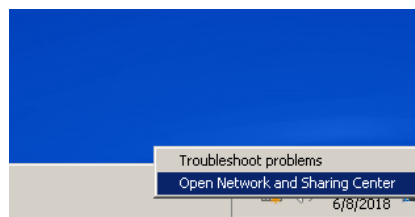
3. Select only “PEAP 1.0.0” and click on “Install”



4. Click on “Finish”. Your system will get reboot now.



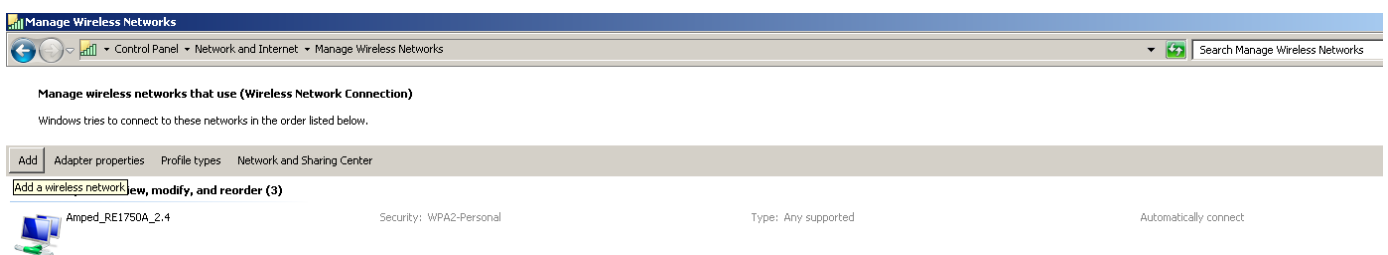
5. After getting reboot, right click on the wifi symbol and click on “Open Network and Sharing Center”.



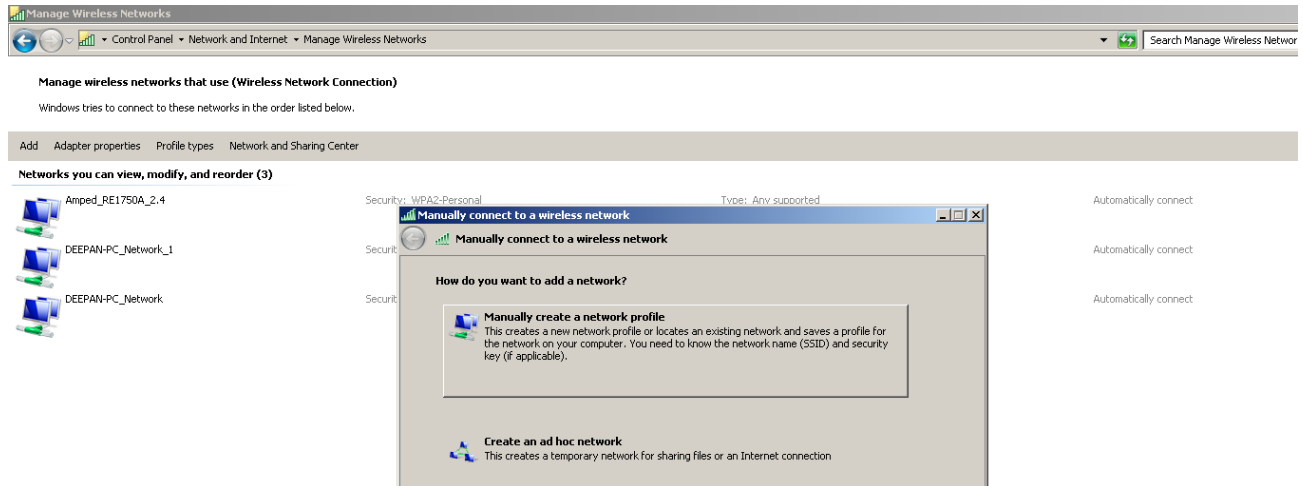
6. Click on “Manage wireless networks”



7. Click on “Add”



8. Click on “Manually create a network profile”



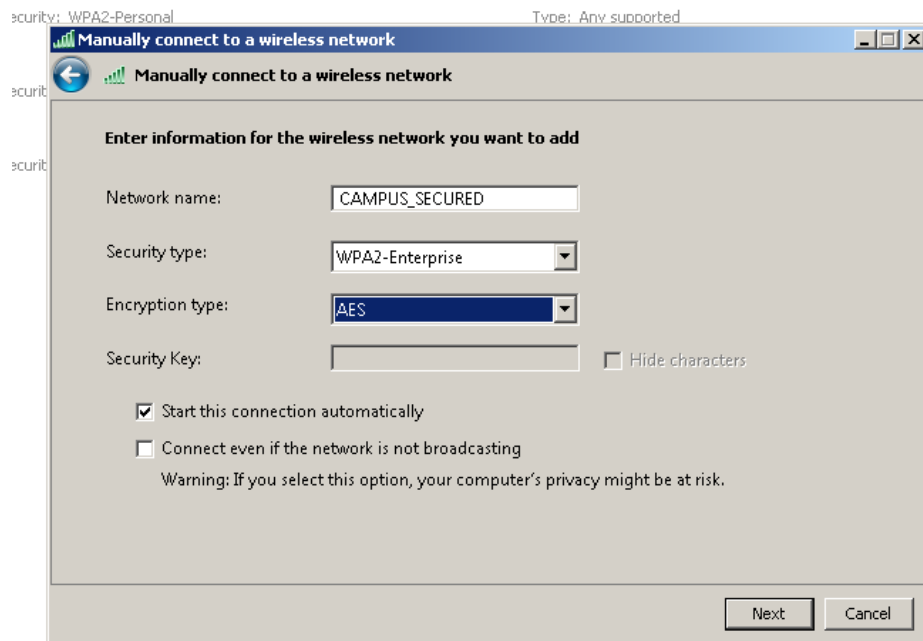
9. Fill up the form on the screen. Set the values in the fields as follows:

Network name: desired network name

Security type: Choose **WPA2-Enterprise** from drop-down menu

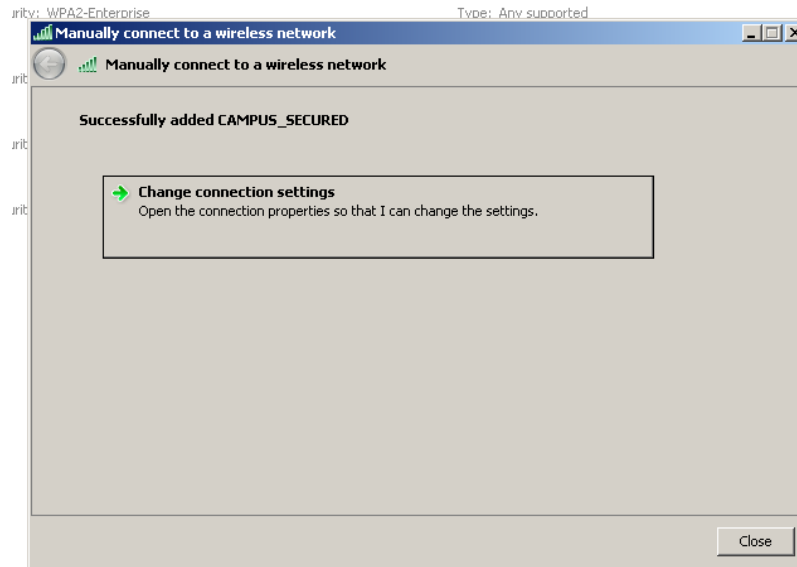
Encryption type: Choose **AES** from drop-down menu

Security Key: Leave blank

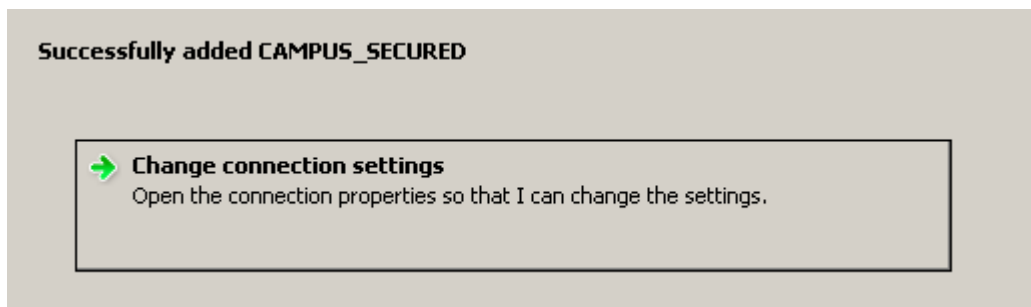


10. Click on “Next”.

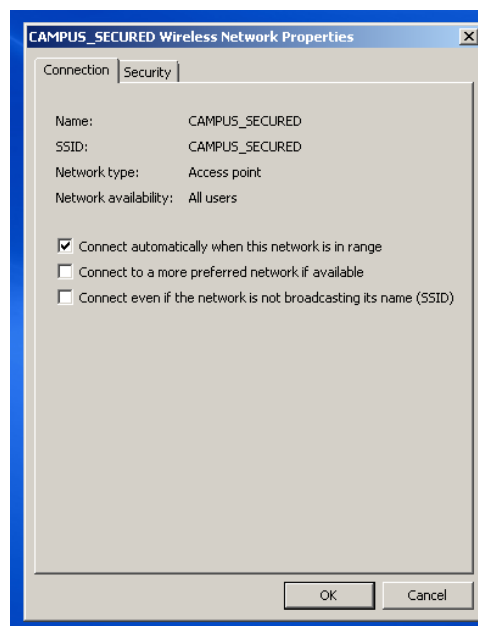
You will get a screen as follows:



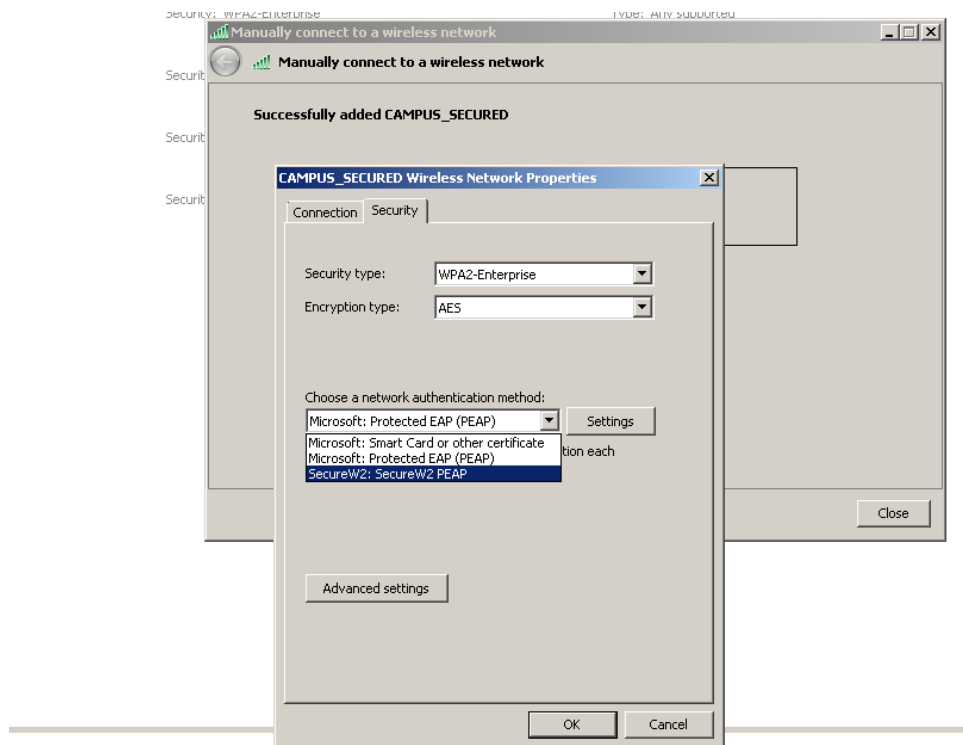
11. Click on “Change connection settings”.



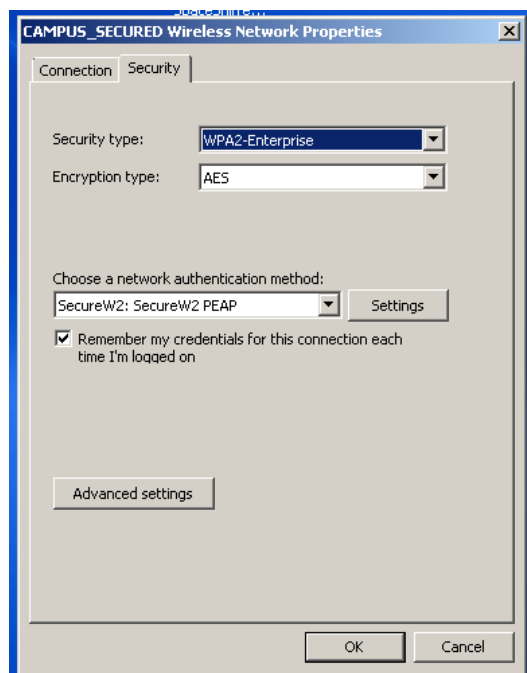
You will get a screen as follows:



12. Click on "Security" tab. Choose the "secureW2 PEAP" from drop down menu.

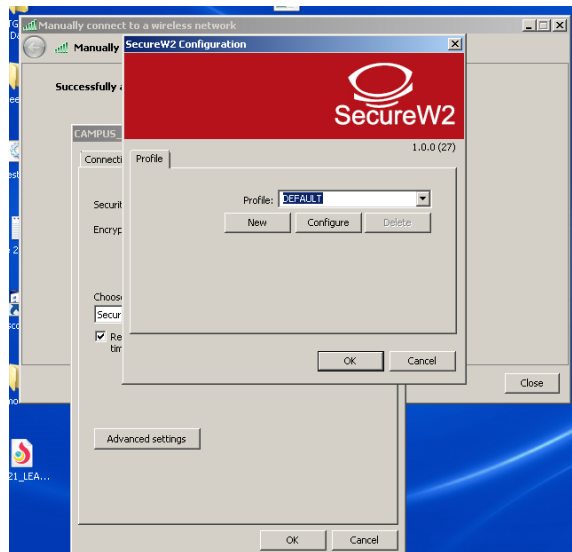


13. Click on "Settings".

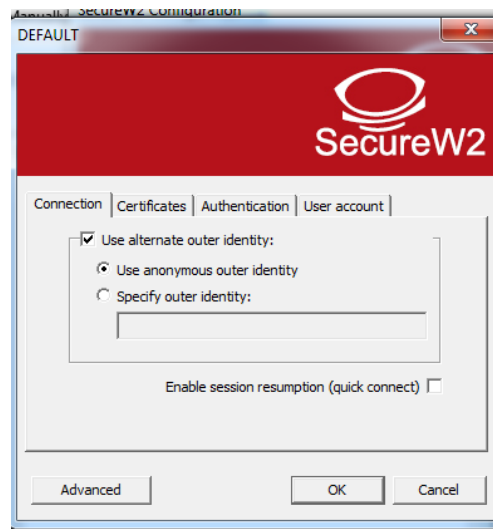


12. You will get a screen as follows:

Click on "Configure"



You will get a screen as follows:



Uncheck the box "Use alternate outer identity:"



Click on “Certificates” tab.You will get a screen as follows :



Uncheck the box “Verify server certificate”.



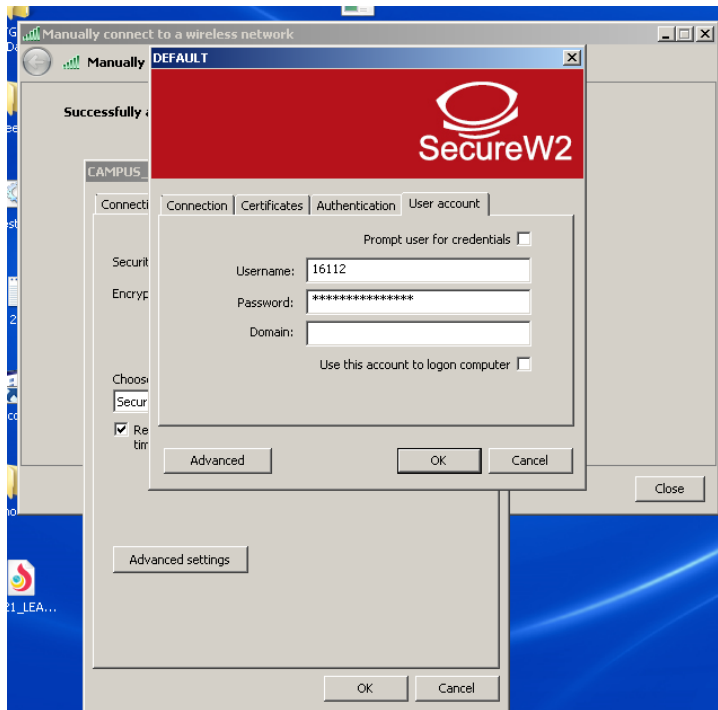
13. Click on “User account” tab. Fill up the form on the screen. Set the values in the fields as follows:

Username: Type your ERP login id

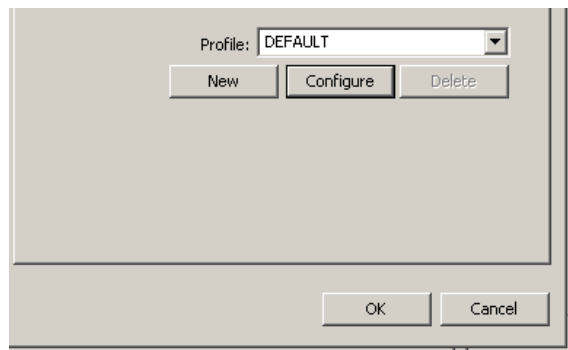
Password: Type your network password (The network password you set in ERP, NOT your ERP password)

Domain: Leave blank

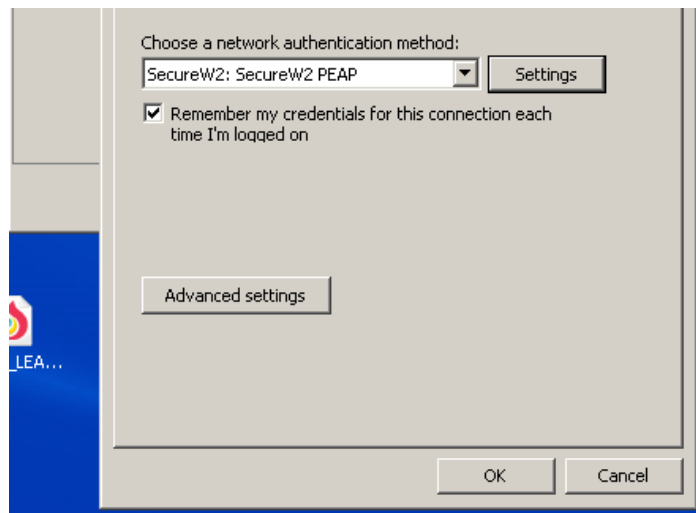
Click on “OK”.



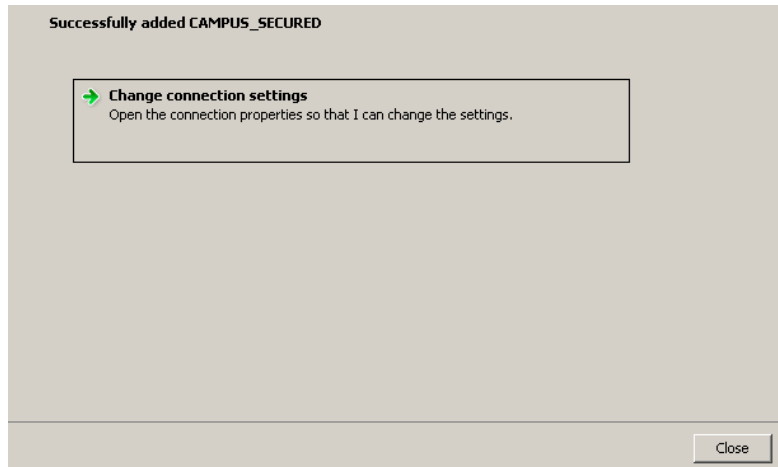
14. Click on "OK".



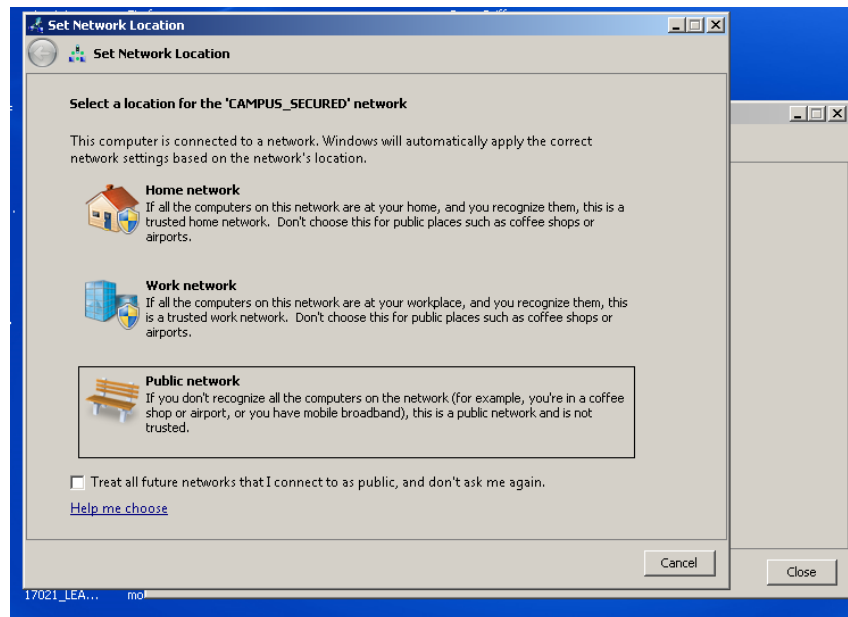
15. Click on "OK".



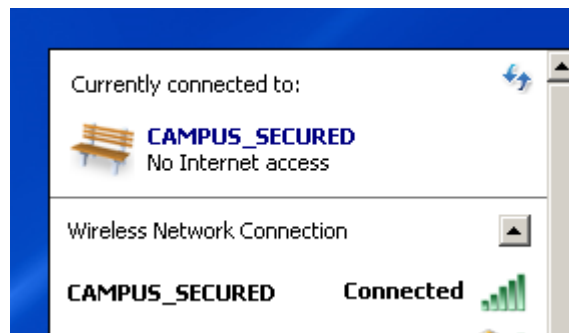
16. "Close" the panel.



17. Cancel the popup panel if come.



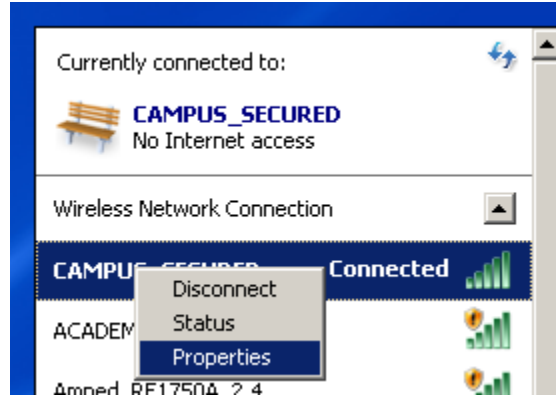
18. You can see that desired SSID is connected if proper input is given.



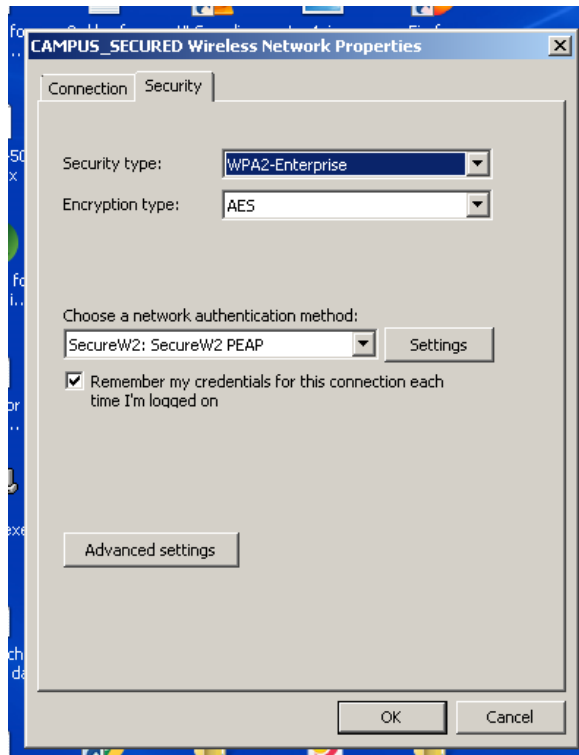
Note: Configure the proxy settings in the same manner as you do now for wi-fi access.

Configuring again if you want to use another user id, password on the same device or change your network password in ERP

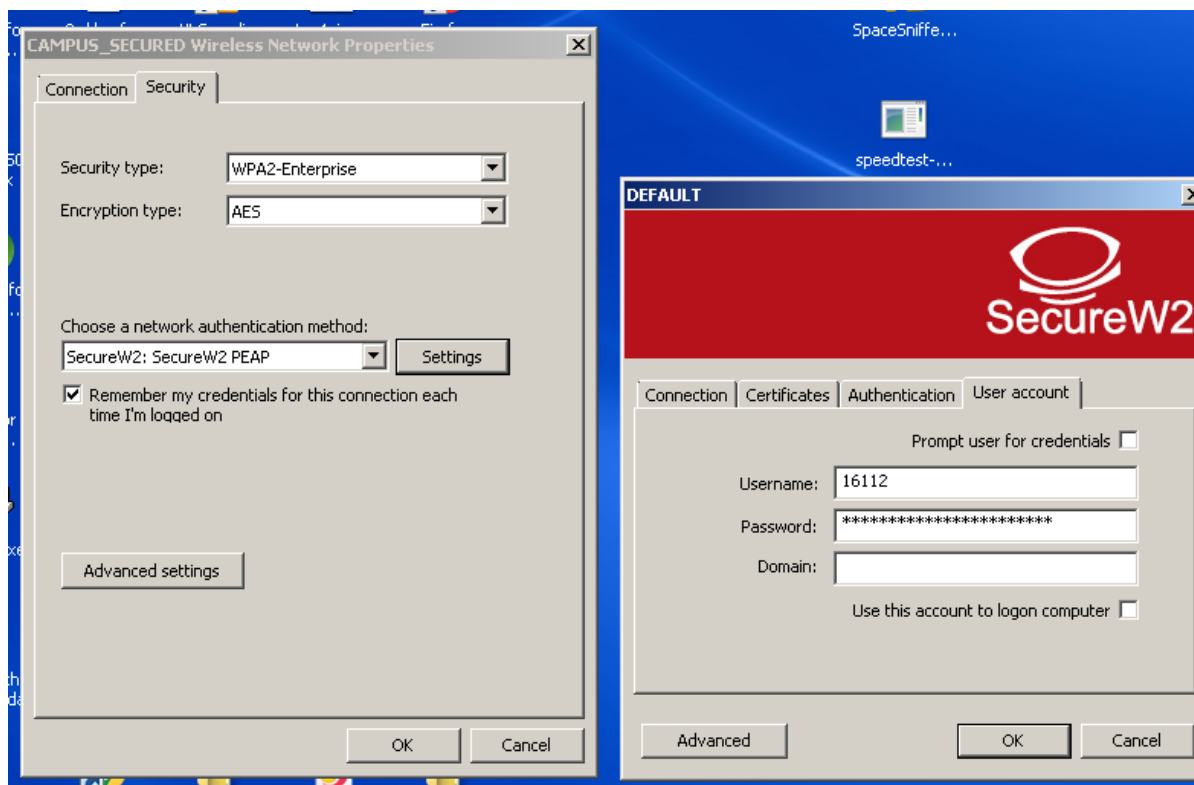
1. Right click on desired SSID and click on “properties”.



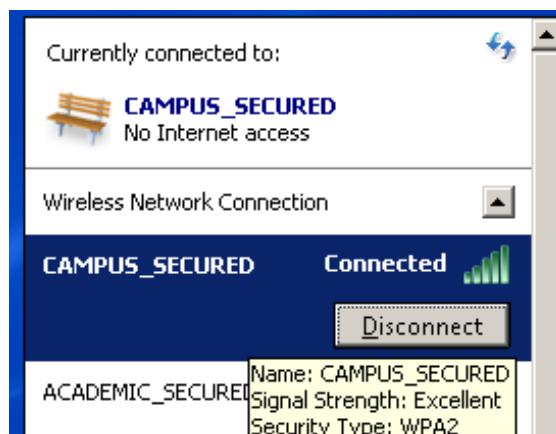
2. Click on “Settings”



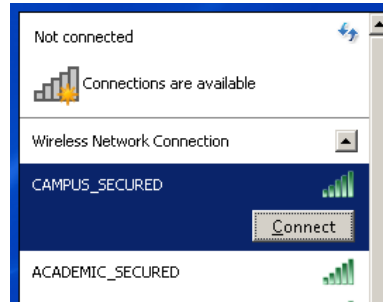
3. The same form as in the case of first time configuration will come. Edit the form as needed in the same way as earlier, then click on "OK" in both the form.



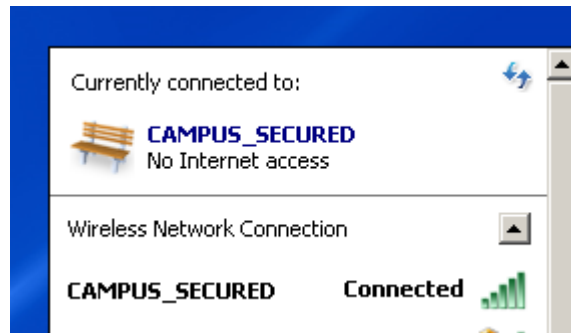
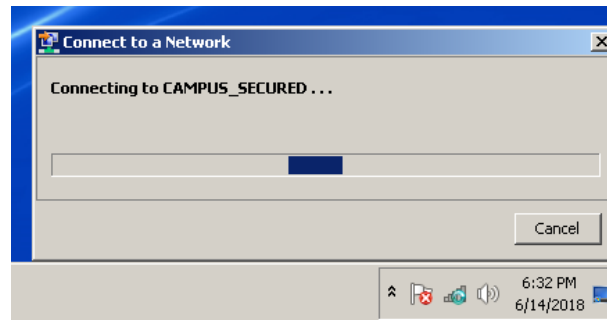
4. "Disconnect" the edited SSID if connected.



5. Reconnect the edited SSID.



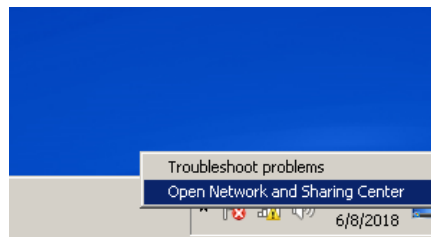
6. You will see the next screen as follows and will be connected



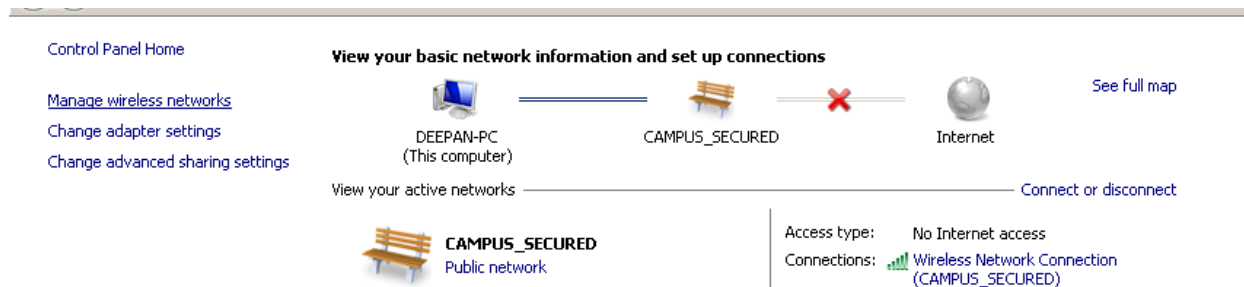
Configuring to forget or delete the SSID

(So that no one else using the same device can log in with your user id and password)

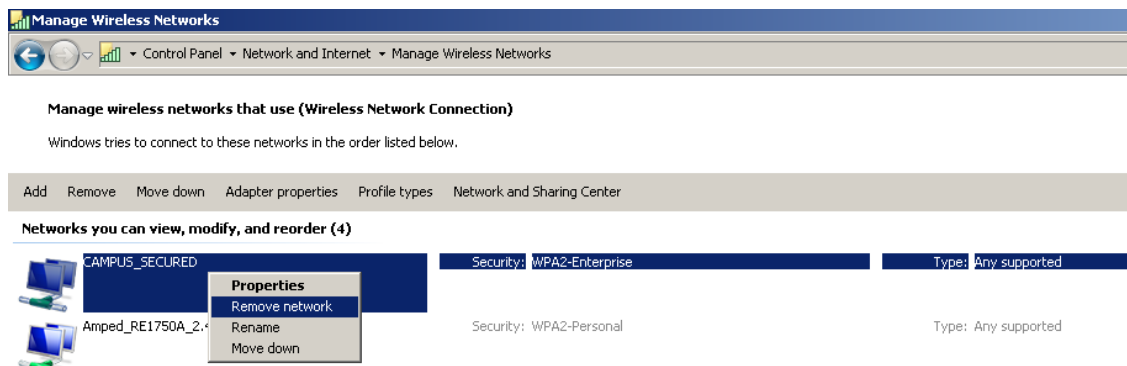
1. Right click on the wifi signal. Click on "Open Network and Sharing Center".



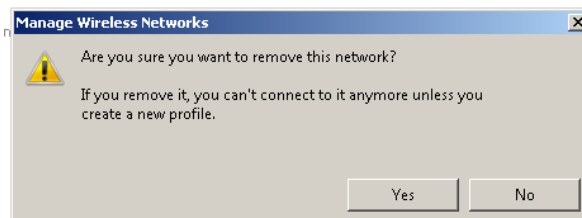
2. Click on "Manage wireless networks"



3. Right click on the desired Network. Click on "Remove network"



4. Click on "yes".



Note: if you forget the network, you will have to set the configuration again (in the same manner as for first time configuration) if you want to log in later in the same SSID with your user id and password.