

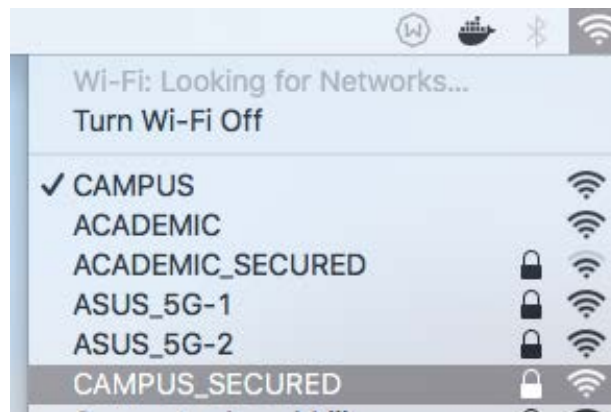
संगणक एवं सूचना केन्द्र  
Computer and Informatics Centre  
भारतीय प्रौद्योगिकी संस्थान खड़गपुर  
Indian Institute of Technology, Kharagpur

**CONFIGURING WI-FI AUTHENTICATION ON MAC DEVICES**

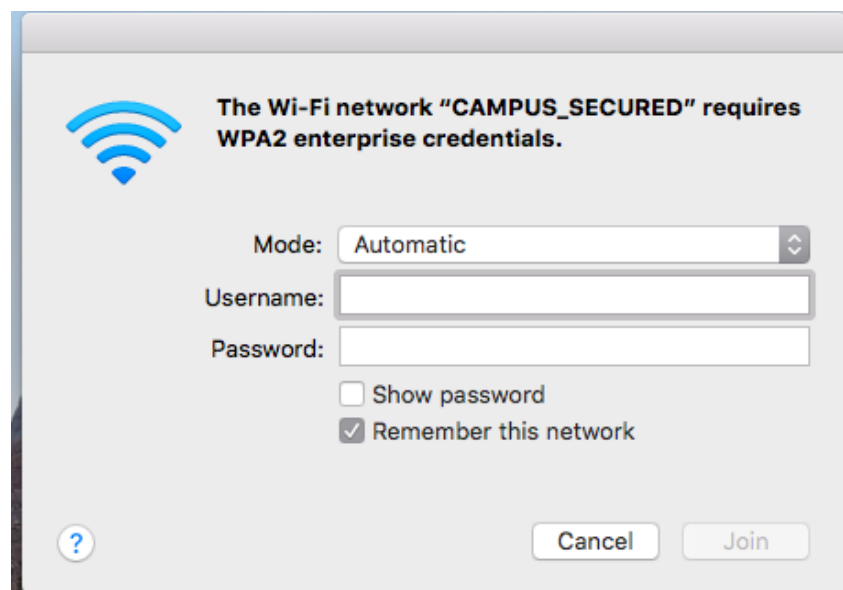
**Note:** You will have to configure each SSID only once if you use the same user id and password. This is a typical configuration for mac devices, Screenshot may slightly differ depending upon devices.

**First Time Configuration**

1. Click on wifi symbol and just hit the desired secured SSID



You will get a screen as follows:



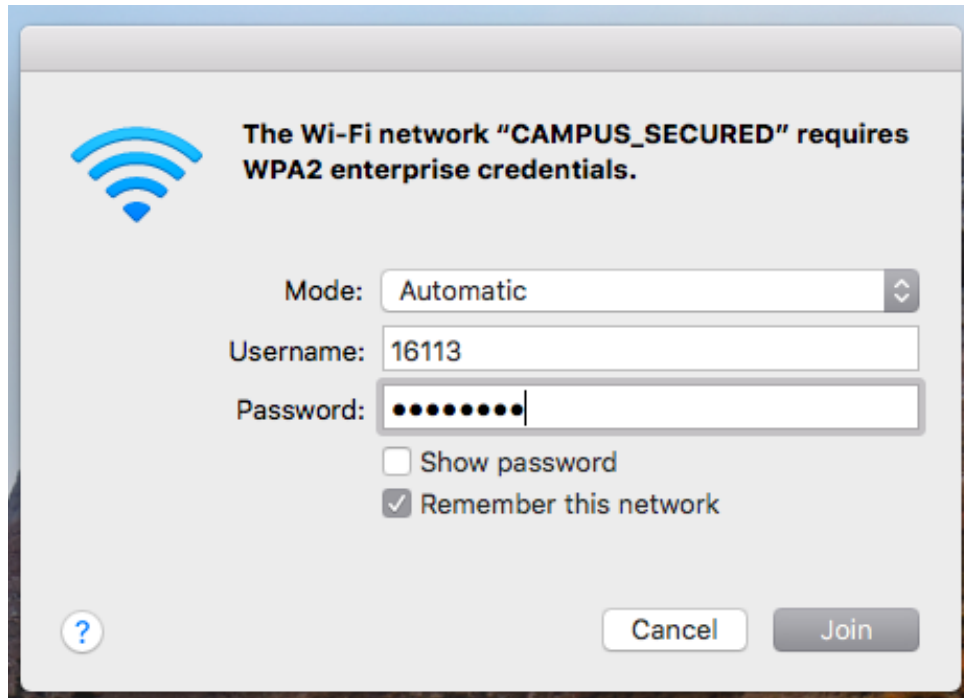
2. Fill up the form on the screen. Set the values in the fields as follows:

Mode: Choose **Automatic** from drop-down menu

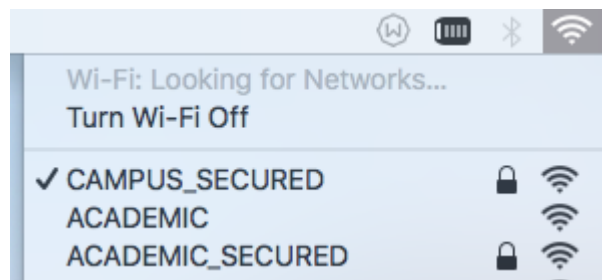
Username: Type your ERP login id

Password: Type your network password (The network password you set in ERP, NOT your ERP password)

Configure the proxy settings in the same manner as you do now for wi-fi access.



3. Click on "Join". You can see that desired SSID is connected if proper input is given.



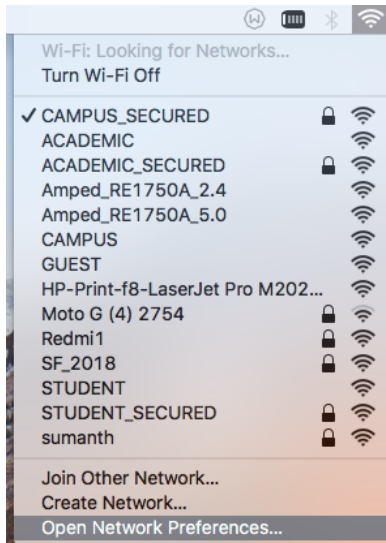
**Configuring again if you want to use another user id, password on the same device or change your network password in ERP**

**OR**

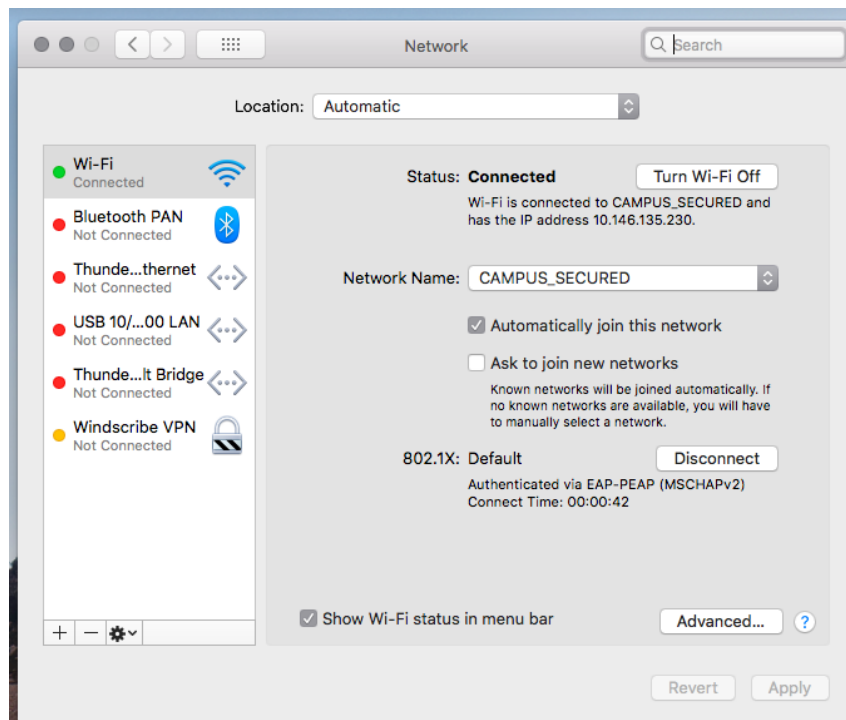
**Configuring to forget or delete the SSID**

**(So that no one else using the same device can log in with your user id and password)**

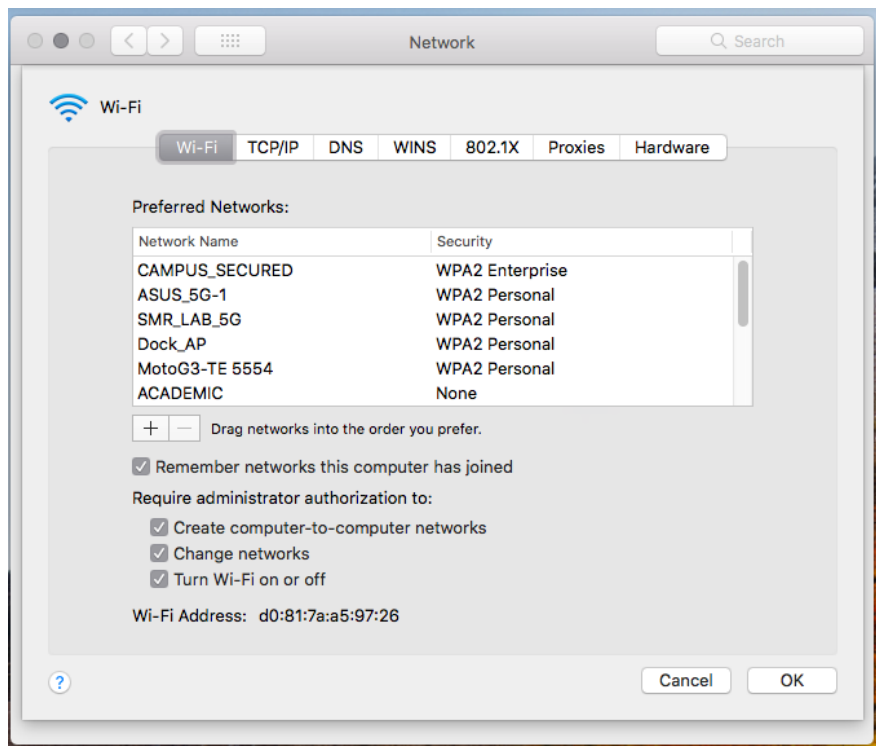
1. Click on Wifi symbol. Select “Open Network Preferences...”



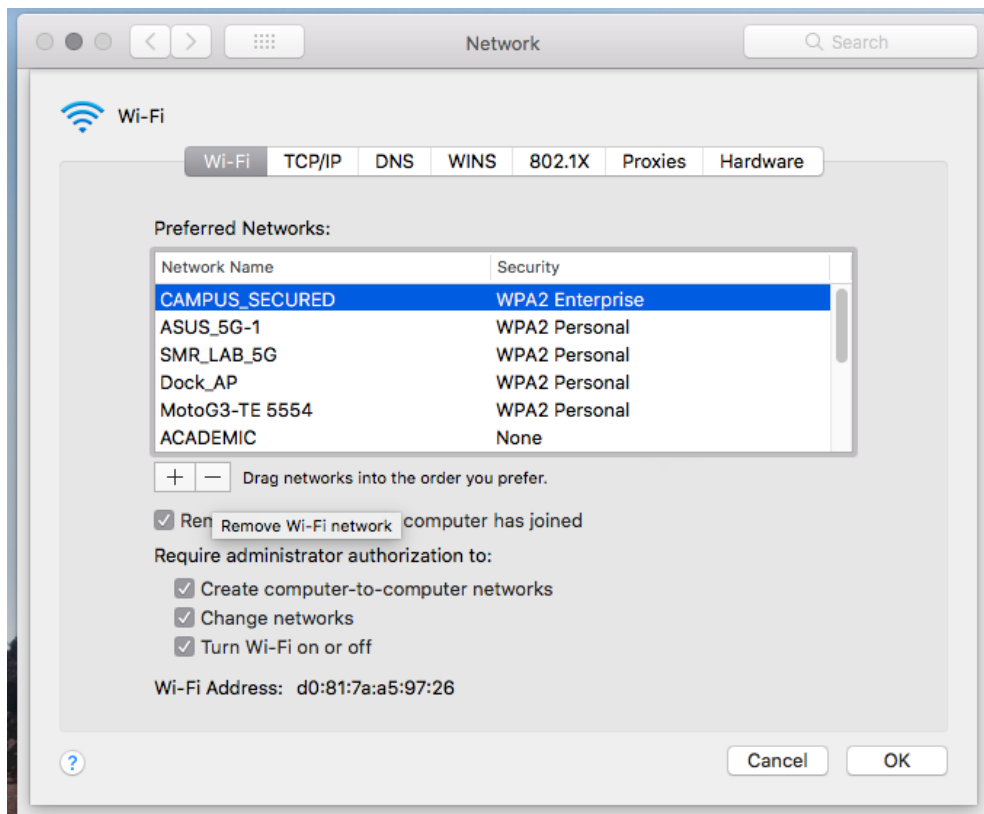
You will get a screen as follows:



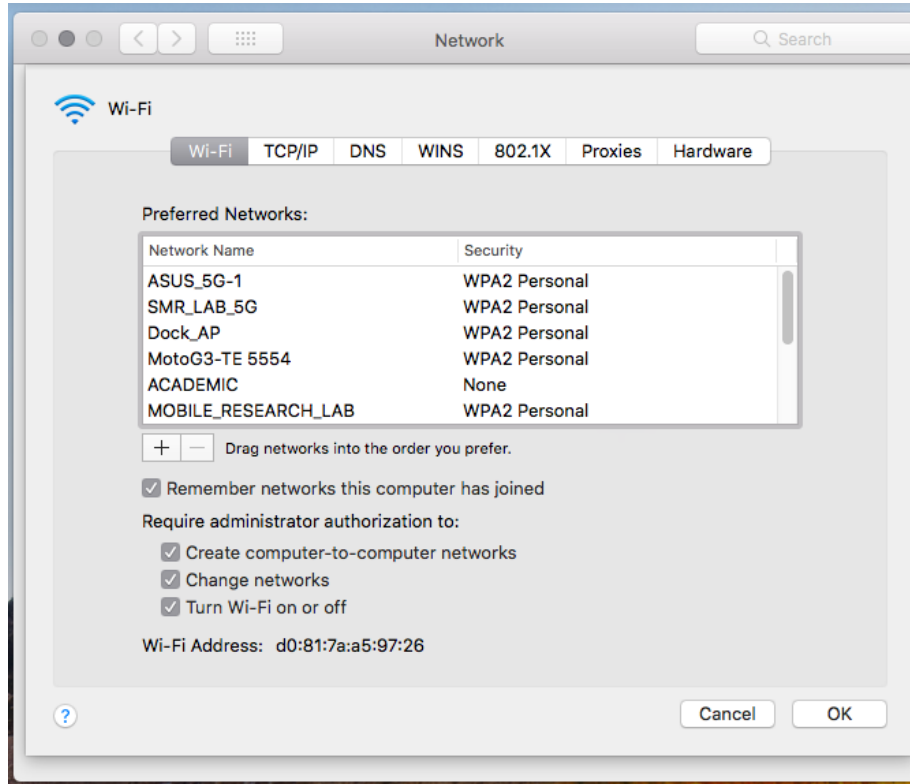
2. Choose desired “Network Name” from drop down menu. Click on “Advanced..” . You will get a screen as follows:



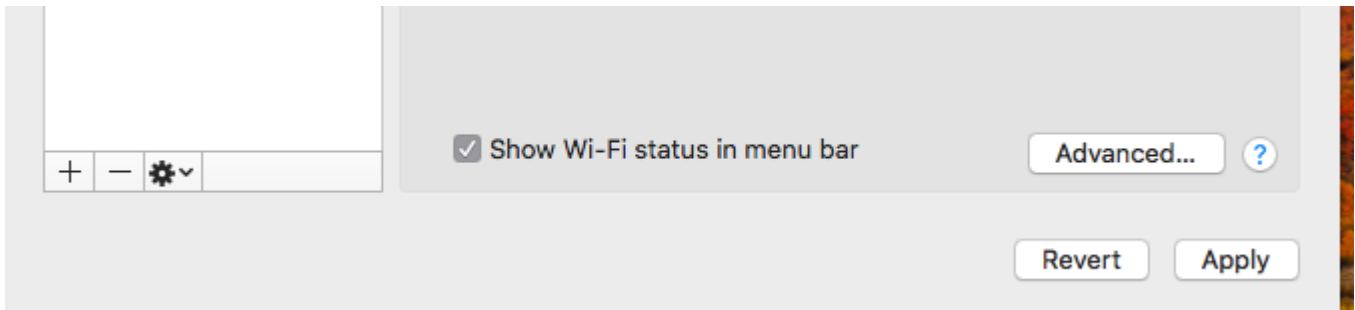
3. Select the desired Network Name. Click on “-“ sign to delete.



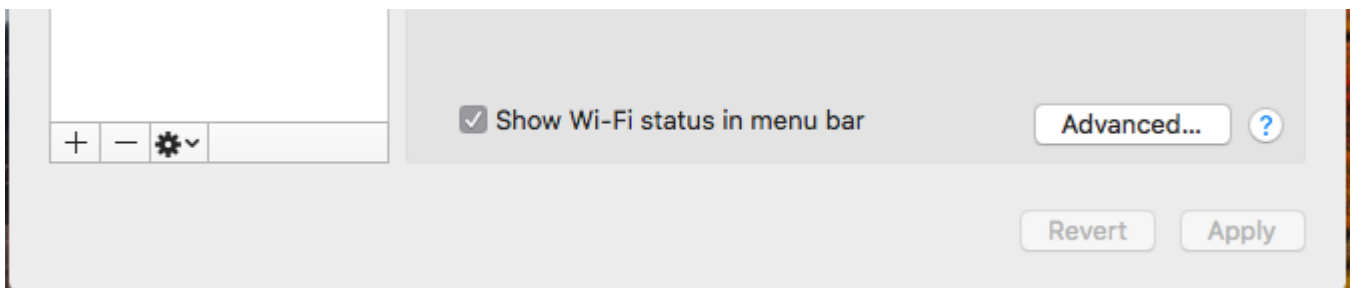
4. Click on “OK”.



5. Click on “Apply”.



You will get a screen as follows:



6. Close the window.



**Note: if you forget the network, you will have to set the configuration again (in the same manner as for first time configuration) if you want to log in later in the same SSID with your user id and password.**